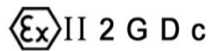


# Ball Valves PN 16/40 AIT & IIT Construction (Carbon Steel and Stainless Steel)



## Fig. 154 / 156

Manufacturing program:

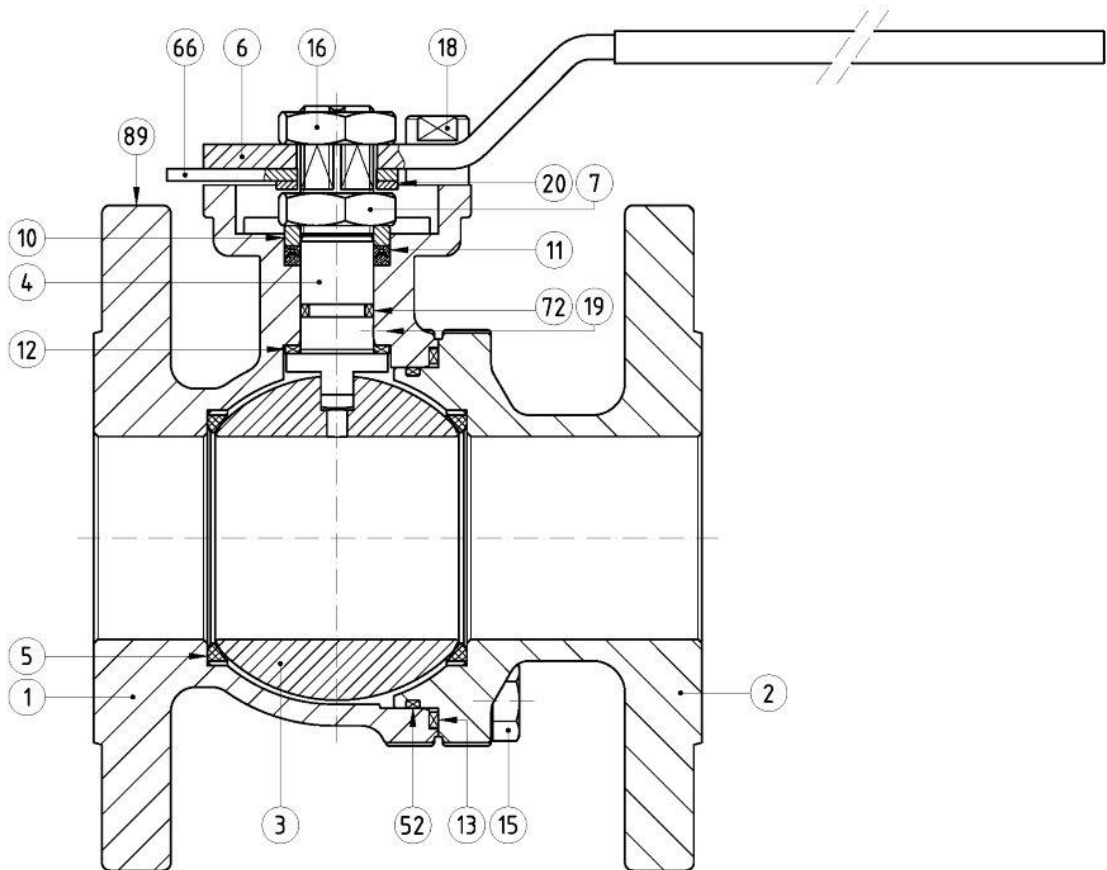


Quality & Environmental Management:



# Ball Valves PN 16/40

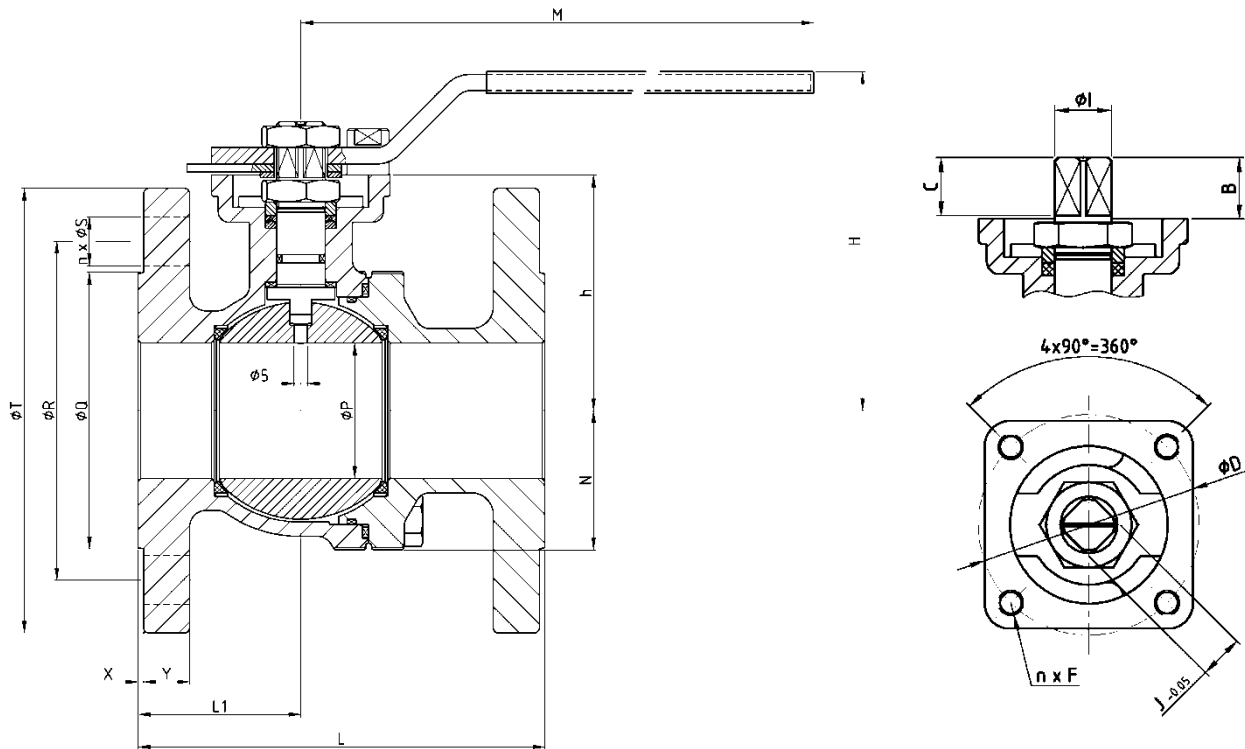
DN 15 - 50 PN 40  
DN 65 - 200 PN 16  
Parts and materials



| Item | Description          | Material                      |        |
|------|----------------------|-------------------------------|--------|
|      |                      | AIT                           | IIT    |
| 1    | BODY                 | 1.0619                        | 1.4408 |
| 2    | BODY CONNECTOR       | 1.0619                        | 1.4408 |
| 3    | BALL                 | A 351 Gr. CF8M / A 479 Tp.316 |        |
| 4    | STEM                 | A 479 Tp.316                  |        |
| 5    | SEAT RING            | PTFE                          |        |
| 6    | WRENCH               | AISI 304                      |        |
| 7    | GLAND NUT            | A2                            |        |
| 10   | GLAND RING           | AISI 304                      |        |
| 11   | GLAND PACKING        | PTFE                          |        |
| 12   | STEM THRUST SEAL     | PTFE + 25% GF                 |        |
| 13   | BODY CONNECTOR SEAL  | PTFE                          |        |
| 15   | BOLT                 | 8.8                           | A2     |
| 16   | WRENCH NUT           | A2                            |        |
| 18   | STOP PIN             | AISI 304                      |        |
| 19   | ANTISTATIC DEVICE    | STAINLESS STEEL               |        |
| 20   | SPACER               | AISI 304                      |        |
| 52   | "O" RING             | FKM                           |        |
| 66   | LOCKING DEVICE       | AISI 304                      |        |
| 72   | "O" RING             | FKM                           |        |
| 89   | IDENTIFICATION PLATE | AISI 304                      |        |
|      | PLASTIC CAP          | PLASTIC                       |        |

# Ball Valves PN 16/40

DN 15 - 50 PN 40  
DN 65 - 200 PN 16  
Dimensions



## Series 154 (PN 40)

| DN | ØP | L   | L1 | ØQ  | ØR  | n x ØS | ØT  | X | Y  | h    | N | H   | M   | Weight |
|----|----|-----|----|-----|-----|--------|-----|---|----|------|---|-----|-----|--------|
| 15 | 13 | 115 | 48 | 45  | 65  | 4 x 14 | 95  | 2 | 16 | 40   | - | 78  | 171 | 2      |
| 20 | 17 | 120 | 52 | 58  | 75  | 4 x 14 | 105 | 2 | 18 | 44,5 | - | 82  | 171 | 3      |
| 25 | 24 | 125 | 46 | 68  | 85  | 4 x 14 | 115 | 2 | 18 | 60   | - | 88  | 171 | 4      |
| 32 | 31 | 130 | 47 | 78  | 100 | 4 x 18 | 140 | 2 | 18 | 72   | - | 100 | 171 | 6      |
| 40 | 38 | 140 | 54 | 88  | 110 | 4 x 18 | 150 | 3 | 18 | 79,5 | - | 118 | 301 | 7      |
| 50 | 50 | 150 | 60 | 102 | 125 | 4 x 18 | 165 | 3 | 20 | 87   | - | 125 | 301 | 10     |

(\*) Dimensions in mm

## Series 156 (PN 16)

| DN  | ØP  | L   | L1    | ØQ  | ØR  | n x ØS  | ØT  | X | Y  | h     | N   | H   | M   | Weight |
|-----|-----|-----|-------|-----|-----|---------|-----|---|----|-------|-----|-----|-----|--------|
| 65  | 65  | 170 | 69    | 122 | 145 | 4 x 18  | 185 | 3 | 18 | 98,5  | -   | 137 | 336 | 13     |
| 80  | 80  | 180 | 68    | 138 | 160 | 8 x 18  | 200 | 3 | 20 | 109,5 | -   | 148 | 336 | 17     |
| 100 | 100 | 190 | 83    | 158 | 180 | 8 x 18  | 220 | 3 | 20 | 125   | -   | 165 | 336 | 26     |
| 125 | 125 | 325 | 120,5 | 188 | 210 | 8 x 18  | 250 | 3 | 22 | 152   | 262 | 192 | 336 | 43     |
| 150 | 150 | 350 | 145   | 212 | 240 | 8 x 22  | 285 | 3 | 22 | 173   | 305 | 217 | 500 | 61     |
| 200 | 200 | 400 | 180   | 268 | 295 | 12 x 22 | 340 | 3 | 24 | 215   | 389 | 265 | 500 | 111    |

(\*) Dimensions in mm

## Actuator connection

| DN  | ISO 5211 | B    | C    | ØD  | n x F   | I       | J  |
|-----|----------|------|------|-----|---------|---------|----|
| 15  | F 05     | 11   | 10,5 | 50  | 4 x M6  | M10x1,5 | 8  |
| 20  | F 05     | 11,5 | 11   | 50  | 4 x M6  | M10x1,5 | 8  |
| 25  | F 05     | 13,2 | 14   | 50  | 4 x M6  | M12x1,5 | 9  |
| 32  | F 05     | 13,2 | 14   | 50  | 4 x M6  | M12x1,5 | 9  |
| 40  | F 07     | 19,5 | 20,5 | 70  | 4 x M8  | M18x1,5 | 14 |
| 50  | F 07     | 19,5 | 20,5 | 70  | 4 x M8  | M18x1,5 | 14 |
| 65  | F 07     | 20   | 21   | 70  | 4 x M8  | M22x1,5 | 17 |
| 80  | F 07     | 20   | 21   | 70  | 4 x M8  | M22x1,5 | 17 |
| 100 | F 10     | 23,5 | 24,5 | 102 | 4 x M10 | M22x1,5 | 17 |
| 125 | F 10     | 24,5 | 25,5 | 102 | 4 x M10 | M22x1,5 | 17 |
| 150 | F 10     | 28,5 | 29,5 | 102 | 4 x M10 | M28x1,5 | 22 |
| 200 | F 12     | 34   | 31   | 125 | 4 x M12 | M35x2   | 27 |

(\*) Dimensions in mm



# Ball Valves PN 16/40

DN 15 - 50 PN 40

DN 65 - 200 PN 16

General Characteristics, Torque & KV, P&T Rating

| GENERAL CHARACTERISTICS       | Fig.156/154 Series SFF | Split Body | Floating Ball | Full Bore |
|-------------------------------|------------------------|------------|---------------|-----------|
| <b>DESIGN STANDARDS</b>       |                        |            |               |           |
| Valves design                 | EN 12516-2             |            |               |           |
| Body design                   | EN 12516-2             |            |               |           |
| Shell thickness               | ISO 17292              |            |               |           |
| Flanges                       | EN 1092-1              |            |               |           |
| Face to face dimensions       | EN 558-1 Series 27     |            |               |           |
| Actuator mounting flange      | ISO 5211               | DIN 3337   | EN 15081      |           |
| Shell finishing quality       | MSS SP55               |            |               |           |
| Marking                       | EN 19                  | CE - PED   |               |           |
| <b>TESTS AND CERTIFICATES</b> |                        |            |               |           |
| Quality Assurance             | ISO 9001               |            |               |           |
| Pressure testing              | ISO 17292              | EN 12266   |               |           |

### Torque Values in Nm

| VALVE SIZE | AT DIFFERENTIAL PRESSURE |        | VALVE SIZE | AT DIFFERENTIAL PRESSURE |        |
|------------|--------------------------|--------|------------|--------------------------|--------|
|            | 16 bar                   | 40 bar |            | 16 bar                   | 40 bar |
| DN 15      |                          | 8      | DN 65      | 41                       |        |
| DN 20      |                          | 12     | DN 80      | 71                       |        |
| DN 25      |                          | 14     | DN 100     | 119                      |        |
| DN 32      |                          | 22     | DN 125     | 190                      |        |
| DN 40      |                          | 27     | DN 150     | 220                      |        |
| DN 50      |                          | 50     | DN 200     | 450                      |        |

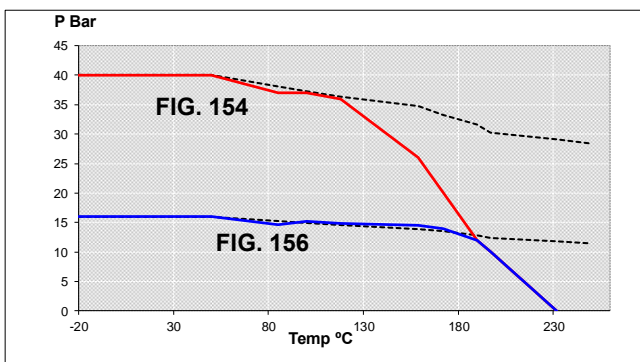
### Kv Values in m³/h

|       |       |        |        |        |        |
|-------|-------|--------|--------|--------|--------|
| DN 15 | DN 20 | DN 25  | DN 32  | DN 40  | DN 50  |
| 20    | 40    | 75     | 130    | 170    | 270    |
| DN 65 | DN 80 | DN 100 | DN 125 | DN 150 | DN 200 |
| 550   | 1000  | 1650   | 3000   | 4200   | 9000   |

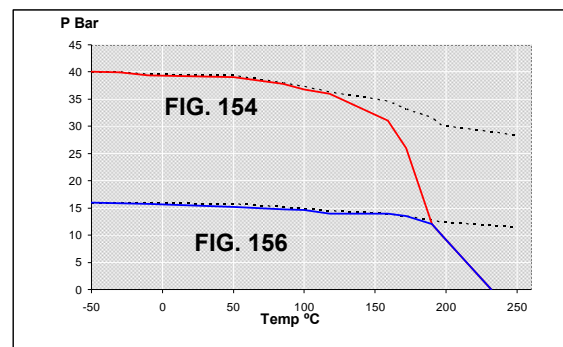
### Pressure-Temperature

### PTFE SEATS

### Pressure-Temperature



For 1.0619 only.



For 1.4408 only.

For other materials consult EN 1092-1